

Counterpath Xlite Soft Phone and the IPitomy PBX

Download

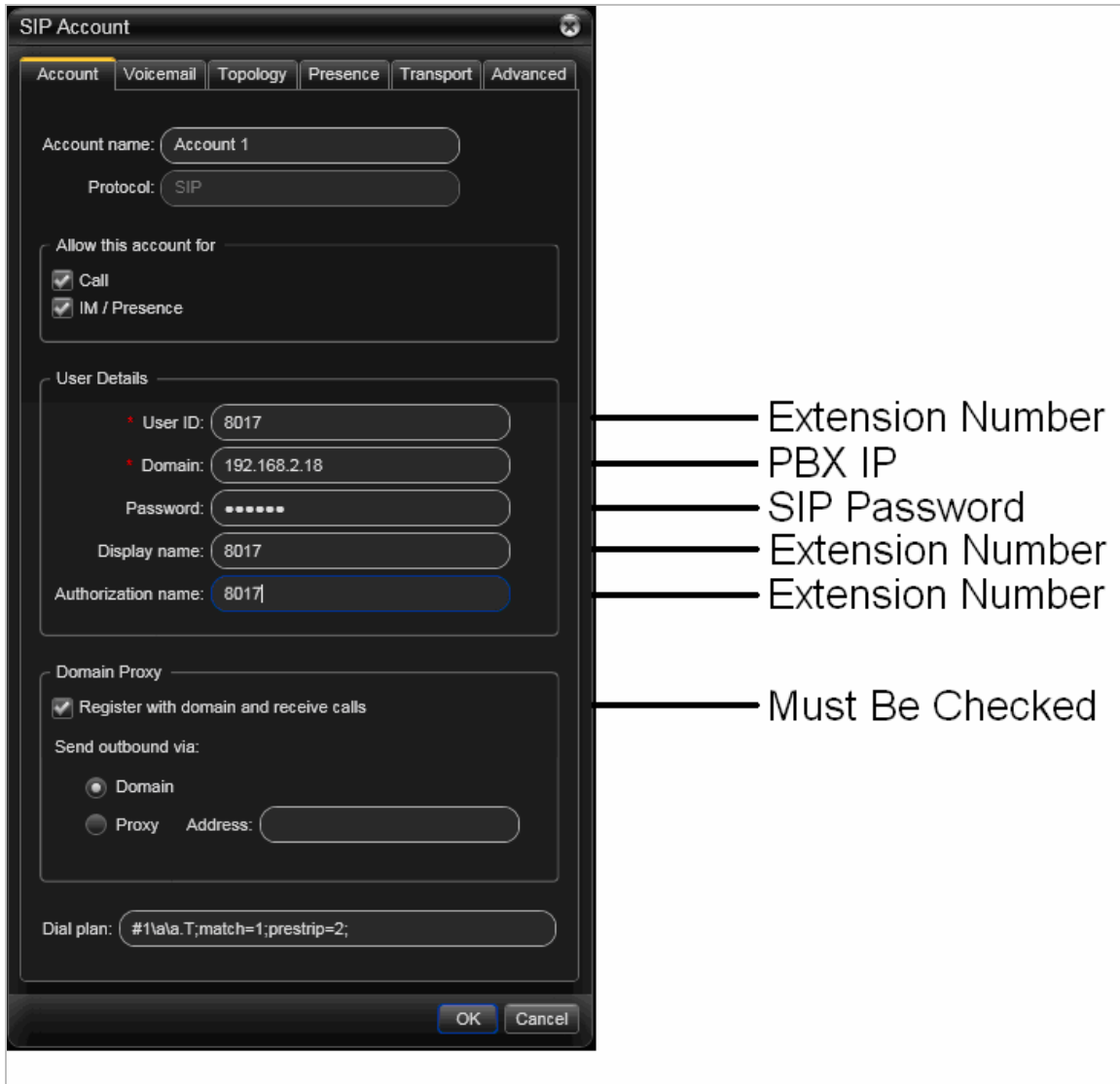
- Using your web browser, navigate to <http://www.counterpath.com/x-lite.html> and download the Xlite phone
- Install the Xlite Softphone on your PC

Configuration

- Launch Xlite and you will see the following window



- Click Softphone at the top of the phone and select Account Settings
- Enter the Extension Number for: Display Name, User Name, and Authorization User Name
- Enter the SIP Password of the extension in the Password field
- Enter the appropriate IP address for the PBX under Domain
- Check the box for 'Register with domain and receive incoming calls'



- Click OK and the phone will register to the PBX

Congratulations, you have now configured your Xlite softphone to work with the IPitomy PBX. You should now be able to see that the phone is registered in the PBX under Monitoring, and you will now be able to make calls.

[Note] In order for DTMF to be correctly recognized, the ext for the Xlite needs to be set to rfc2833. Since the free Xlite phone only offers one channel, you will not be able to use the Xfer button on the phone itself. In order to transfer you will need to dial ##<extnum>#.